

Workplace Giving Information



We're so excited that you are considering Workplace Giving as a way to support those impacted by epilepsy. Workplace Giving is an easy way to provide impactful support to help us continue our work.

What are the benefits?

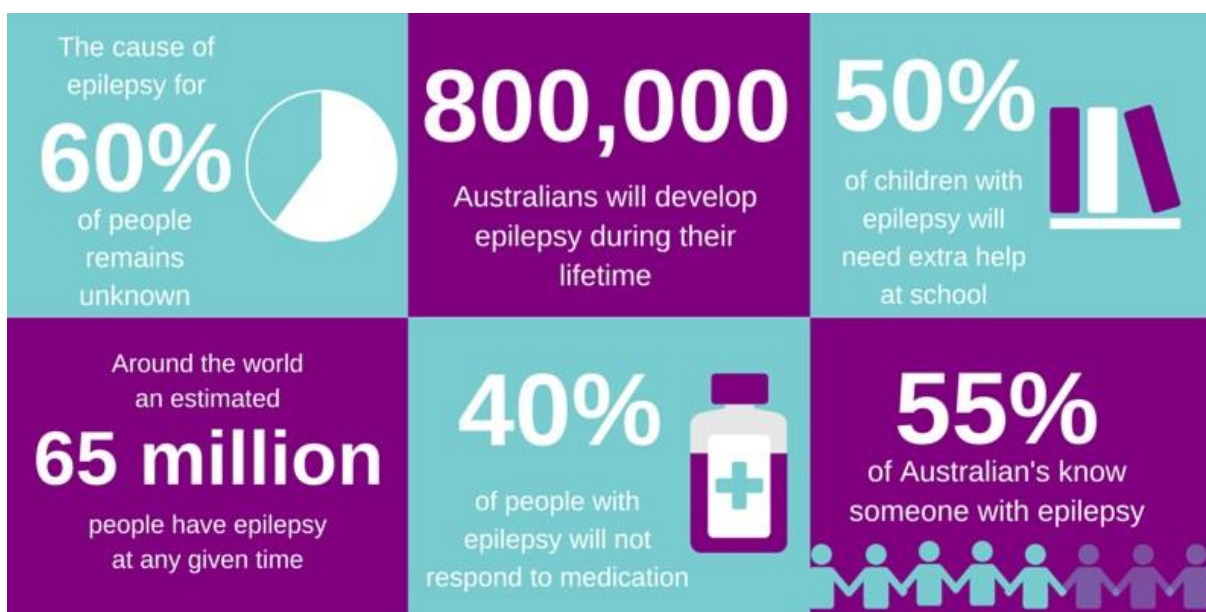
Donating through workplace giving is done by making donations from your pre-tax salary. This means you will see tax benefits as your taxable income is reduced – meaning you make a saving!

Very low maintenance giving. It's an easy and convenient way to give that's simple to set up.

Workplace Giving benefits us as a charity as it not only makes a difference to those impacted by epilepsy, but the regular nature of the donation allows us to plan long term, enabling us to better support those we serve.

Why choose Epilepsy Action?

Epilepsy is the world's most common serious brain disorder, and is more prevalent than Parkinson's, cerebral palsy and muscular dystrophy combined.



We are the largest national provider of specialist epilepsy education and support for people with epilepsy, their carers, families and the broader community.

Epilepsy Action has been serving the community for over 60 years and during this time raised the funds required through its own fundraising, with only a very small percentage of funding from government.

We need your help to continue to provide these important services.

How does my donation help?

Your recurring donation goes a long way to ensuring we can continue to increase awareness, understanding, knowledge and support for those impacted by epilepsy. And every little helps!

\$10 provides a person with epilepsy access to online seizure management tools

\$25 provides a person with epilepsy a Newly Diagnosed Information Pack

\$40 provides a person impacted by epilepsy access to lifesaving seizure first-aid training

\$50 funds a much needed initial consultation with our support team

\$100 provides a Ted-E-Bear Education Package to a child impacted by epilepsy

\$250 funds an education session for a family affected by epilepsy

\$400 sends a child with epilepsy to a fun and supportive Action Adventure Therapy Camp



How do I get started?

Anyone anywhere can do workplace giving!

We are listed with some online giving providers that your company may be registered with. These include Good2Give, GoodCompany and Benojo.

If your company is listed on one of these platforms you can just choose us as your organisation, choose your amount and the platform will do the rest! Speak to your HR, finance or community team to get this arranged for you.

Unfortunately due to funding constraints we are not able to be on every workplace giving provider platform – but if your company uses one and we are not listed, please let us know. We might be able to sign up depending on the registration and sign up fees associated with the platform.

If your company is not with a specific provider, or we are not on that system, you can still become a workplace giver. It's as simple as letting your finance or HR team that you would like to donate some of your pre-tax salary to our organisation. We've enclosed a template letter with our account details that you just need to print, fill in and sign and present to your finance team to get set up.

If you (or your HR, finance or community team) have any questions you can contact us any time on 1300 37 45 37 or epilepsy@epilepsy.org.au, please ask to speak to Fiona.

Thank you for using your payday to increase awareness, understanding, knowledge and support to those impacted by epilepsy across the country. We are so grateful for your support!

Epilepsy Action Australia Payroll Deduction Authority



Epilepsy
Action
Australia

To whom it may concern,

I, _____, hereby authorise

_____ (name of employer) to deduct the
sum of \$ _____ from my weekly / fortnightly / monthly pay and remit it to Epilepsy Action Australia.

This authority will take effect from pay period week ending ___ / ___ / _____ and will continue until withdraw by me
in writing.

Epilepsy Action Account details for direct deposit:

Bank: Westpac

BSB No: 032-287

Account No: 233632

Deposit Reference: _____ (Payroll to complete)

Payment by cheque can be sent to:

Epilepsy Action Australia

PO Box 879

Epping NSW 1710

Once action has been taken on this deduction, please email a copy of this signed authority and chosen deposit
reference to epilepsy@epilepsy.org.au so they can ensure the funds are received and correctly allocated.

Name: _____

Signature: _____

Date: ___ / ___ / _____

If you need to discuss this with Epilepsy Action Australia please contact Fiona on 1300 37 45 37 or at
fjones@epilepsy.org.au.

www.epilepsy.org.au

ABN 61 000 533 791 CFN 11390 (NSW), 48864 (VIC), CH1411 (QLD), 1131 (SA), 21416 (WA)