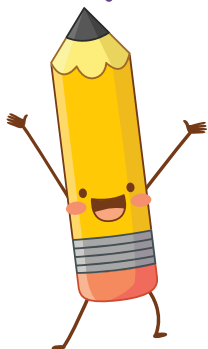


Examining Academic Achievement in Children



Are you the parent of a child
with epilepsy aged 8 – 17?

Would you like to help us find out what factors are important when developing academic skills?

If you would like to participate in this research study, scan the QR code or follow this link:



https://sydney.au1.qualtrics.com/jfe/form/SV_dcKrsOKTd uKD8G1

If you have any questions, please contact Belinda Poole on 0422 739 005 or belinda.poole@sydney.edu.au